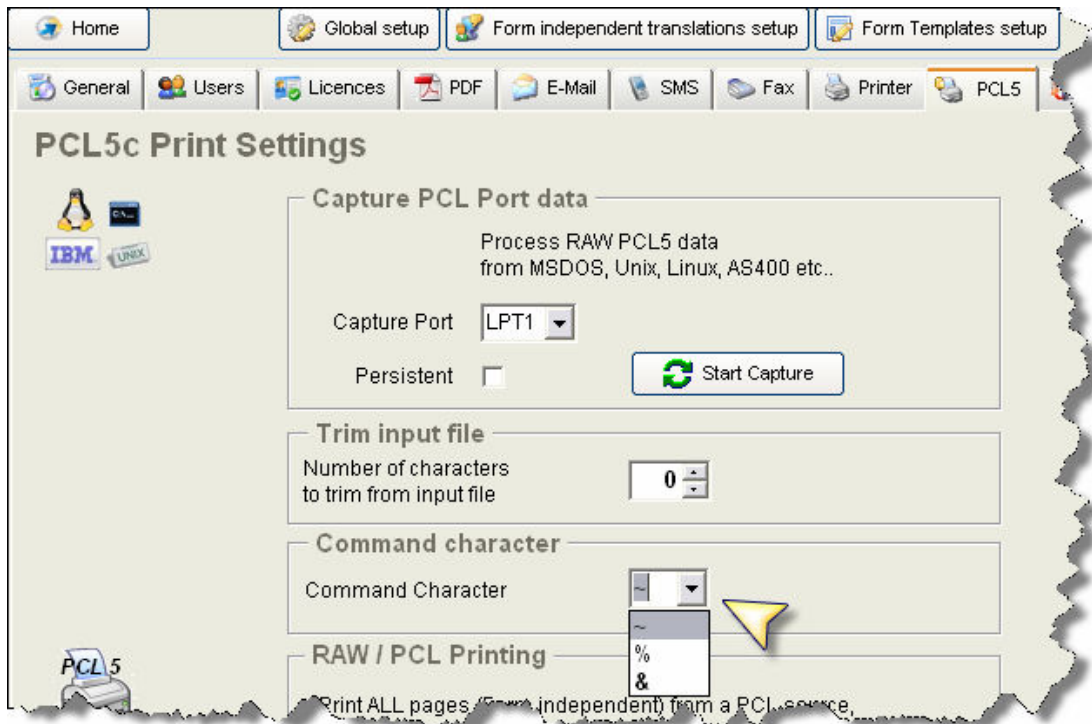


PCL5 AutoDoc commands and variables:

Global setup -> PCL5

Choose the Command character to use, preferably the & character and choose apply on the right top corner.



Since you might not have colour in Dos like programs, the AutoDoc syntax can also be:

&Form number|language|autodoc command 1|autodoc command 2|&

Note the red characters have to be there and start and finish must have a & character and the Form number has to have 2 digits.

The whole line will be deleted (replaced by space characters) before further processing

Example:

&20|EN|info@iddata.nl|0402912085&

Choose Form 20, Language template for E-Mail and Fax is EN (English), send e-mail to info@iddata.nl and send fax to 0402912085

Variables start with:

&AVariable 1&

&BVariable 2&

&CVariable 3&

....

&TVariable 20&

Example:

&A123456&

&BXYZ Electrical&

Result:

<space><space>123456<space> (in RGB 1,1,1)

<space><space>XYZ Electrical<space> (in RGB 2,2,2)

the &A and ending & will be replaced by space characters, the variable will be retained and the colour of the variable as seen by AutoDoc will be fixed 1,1,1 for A, 2,2,2 for B etc...

&AVariable 1& will put the value 'Variable 1' in Invoice Number

&BVariable 2& will put the value 'Variable 2' in Customer Number

Home Form: 01 01. Enter Form Name here....

Variables Letterheads E-Mail Fax Print PDF Archive XML A

Enter variable names for the current form here. Enter a colour of the variable if no colour is available the region where the variable(s) can be found. The region is the top left corner (x1,y1) to the bottom right corner (x2,y2).

Colours for AutoDoc user-defined textual variables: ----- Colours ----- OR

Field name	Red	Green	Blue
Invoice Number	1	1	1
Customer Number	2	2	2
Variable 3	3	3	3

These variables can then be used in almost every user definable field in E-Mail, Fax and Archive

Variables Letterheads E-Mail Fax Print PDF Archive XML

CC NO CC

BCC NO BCC

Include attachments PDF XLS XLT TXT XML

English (EN) Français (FR) Deutsch (DE) Español (ES) Italiano (IT)

Subject Invoice number %Invoice Number%

Message file Text/HTML

Message text Hello, Please find enclosed %Invoice Number% for %Customer Number%

Also parts of each variable : **%variable name%(from position, to position)** can be used, in this case with PDF Archiving.

Variables Letterheads E-Mail Fax Print PDF Archive XML Archive

PDF Path #1 c:\documents\%Customer Number%\%Invoice Number%.pdf

Run program Parameters

PDF Path #2 c:\documents\Invoices %Invoice Number%(1,3)000 to %Invoice Number%(1,3)999%\%Invoice Number%.pdf

Run program Parameters

PDF Path #3