



## User Manual of 7.1 USB Sound Card Windows Vista, Windows 7,8 and 8.1

### ***1. Introduction***

#### ***1.1 Package Content***

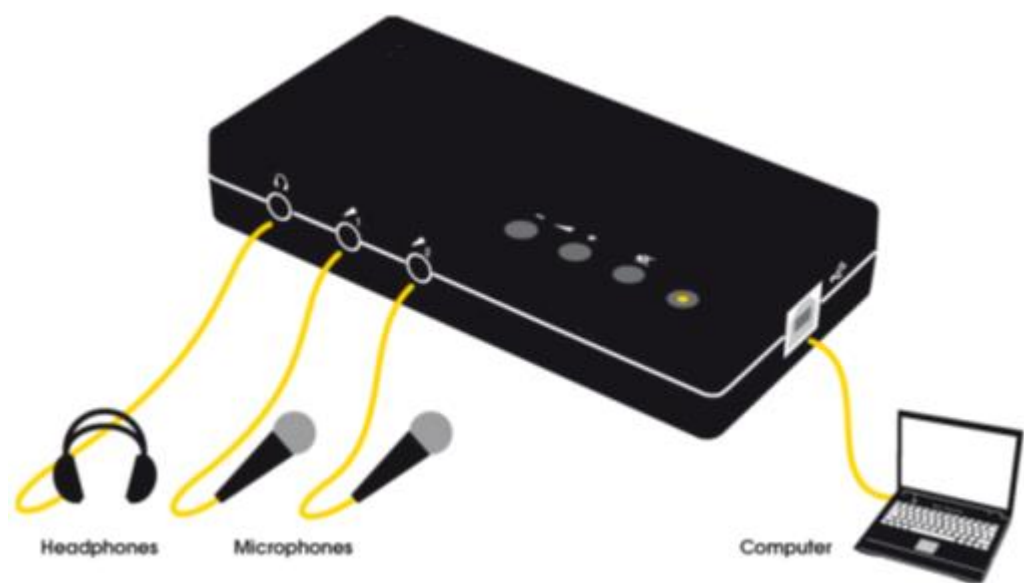
- 1pcs Diamond XS71U 7.1 USB sound card
- 1pcs USB cable (1.8m)
- 1pcs Software CD
- 1pcs Quick Start Guide

## 1.2 Layout of the 7.1 USB Sound Card

### Front View



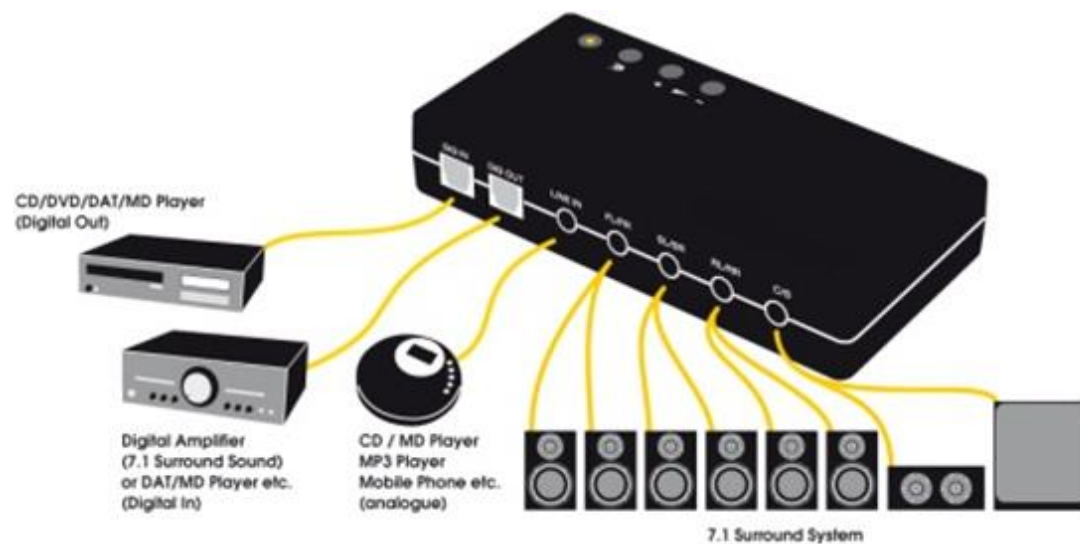
- 1 – Analog Headphone stereo line output (3.5mm jack plug)
- 2 – Analog Microphone input (3.5mm jack plug)
- 3 – Analog Microphone input (3.5mm jack plug)
- 4 – USB port
- 5 – Volume up
- 6 – Volume down
- 7 – Mute



### Rear View



- 8 – Digital S/PDIF input (Toslink)
- 9 – Digital S/PDIF output (Toslink)
- 10 – Analog stereo line input (3.5mm jack plug)
- 11 – Analog stereo line output “Front” (3.5mm jack plug)
- 12 – Analog stereo line output “Surround” (3.5mm jack plug)
- 13 – Analog stereo line output “Rear” (3.5mm jack plug)
- 14 – Analog stereo line output “Center/Sub” (3.5mm jack plug)



## ***2. Installation***

### ***2.1 Connecting the 7.1 USB Sound Card to the computer***

To connect the 7.1 USB Sound Card to your computer, you need a free USB Type A port.

It makes no difference whether the port is a USB 1.1 or USB 2.0 port; the device functions equally well when attached to either.

The 7.1 USB Sound Card is hot-pluggable, which means that you can connect or disconnect the unit at any time while the computer is running.

### ***2.2 Drivers Install***

When connected to your system for the first time, the 7.1 USB Sound Card installs a driver that is integrated into Windows; this process is completely automatic.

Insert the 7.1USB Sound Card software CD and install the Control Panel using the Autorun feature. Double-click AUTORUN.EXE in the root folder of the 7.1 USB Sound Card CD and select first the "Software Installation" menu item and then "7.1 USB Sound Card".

Please follow the install instructions.

## ***3. Control Panel***

### ***3.1 Main Setting***

#### **System Input**

This defines the number of channels that go directly to the sound card. For best sound experience choose the speaker-configuration of your audio-playback (for mp3 files, choose for example "2CH", a DVD with multichannel "6CH" or "8CH").Click the question mark to get more information.

#### **DSP Mode**

To access the DSP mode, you have to activate the two switches labelled. With this mode you can adjust the sound depending on the circumstances. You can also switch virtual boxes, without having the actual speaker to adjust physically.

## Output Mode

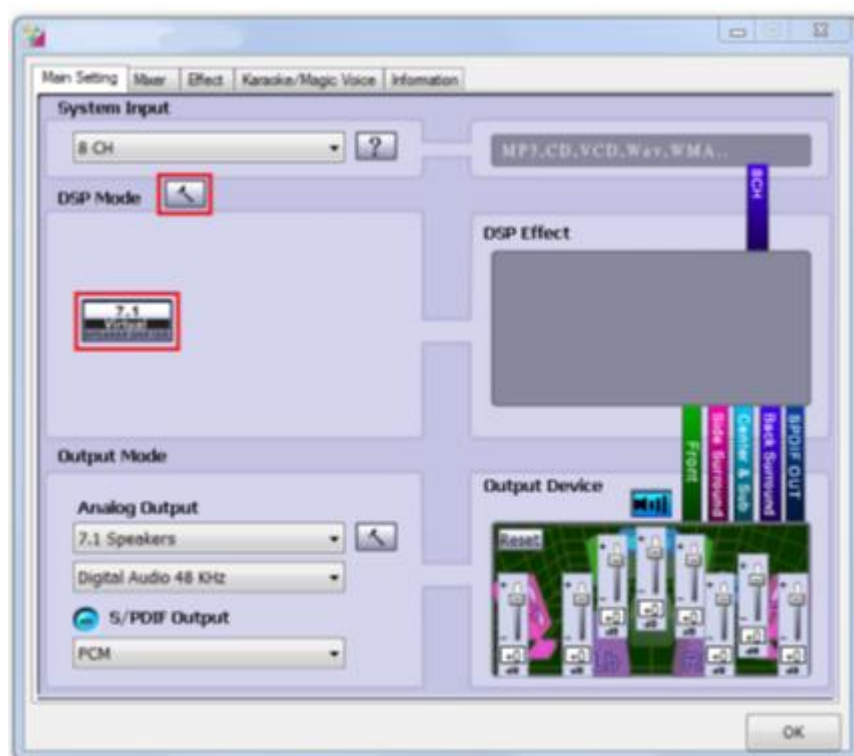
Set the speaker configuration you want to use here. Whenever you make a change, the 3D model of the speakers changes accordingly. This setting defines the number of analogue out-puts.

You can activate every single speaker separately here to test them for correct wiring and function. If you click on a speaker to activate it, you will hear static from that speaker.

One part of the display (+/- 20 dB) is a readout of the volume dials which are next to each speaker.

You can raise or lower the volume of each separate speaker by clicking the corresponding volume dial and moving the mouse forwards or back. This allows you to match the surround sound perfectly to your room and speaker system.

Clicking the "Reset" button resets all values to the pre-defined.



## 3.2 Mixer

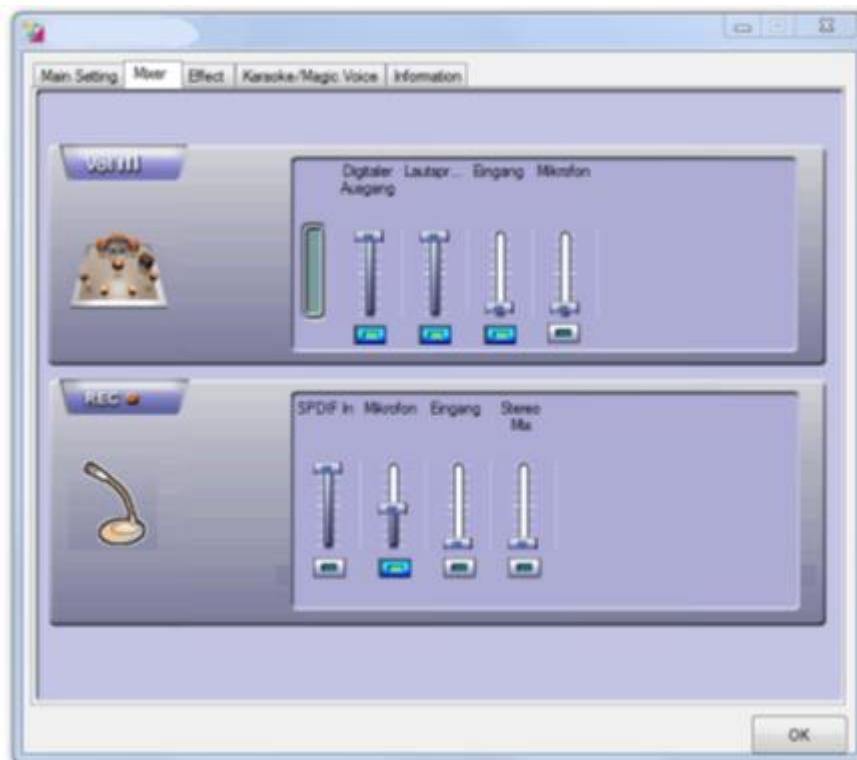
### Volume

You can adjust the volume of each individual input here. The faders controls the different inputs and give you the ability to mute one using the MUTE button or adjust the volume of the speakers using the faders.

### Record

In the Record window you can set the signal source that you want to record and its volume.

S/PDIF is a digital signal that does not allow volume control.



### 3.3 Effect

#### Environment

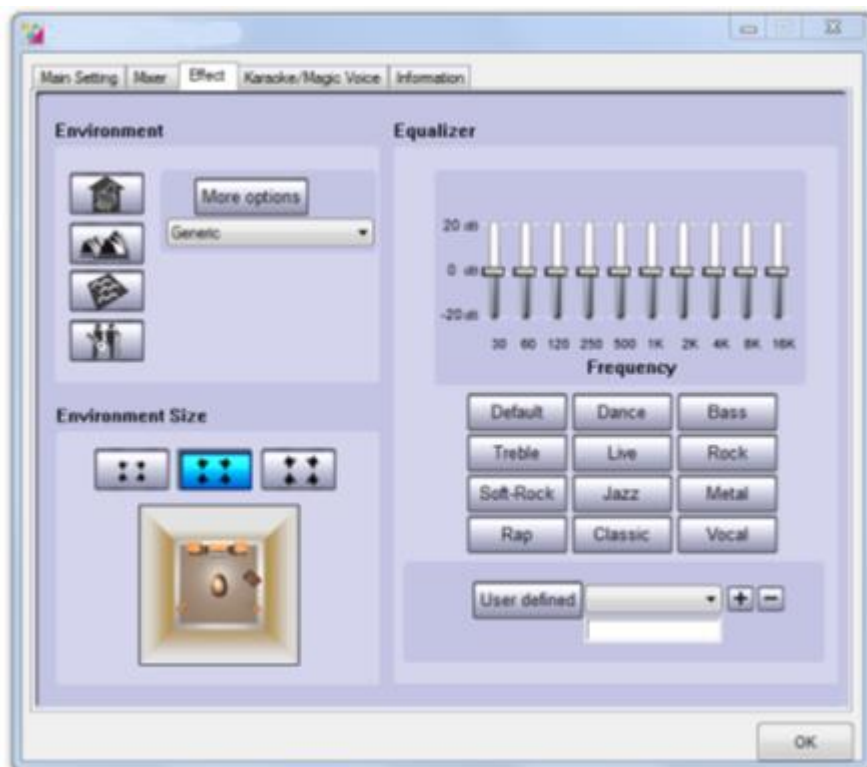
You can use this menu to simulate sound effects. Have fun experimenting with different settings!

#### Environment Size

Select the size of the room in which you have set up the 7.1 speakers. This selection adjusts the volume to the room.

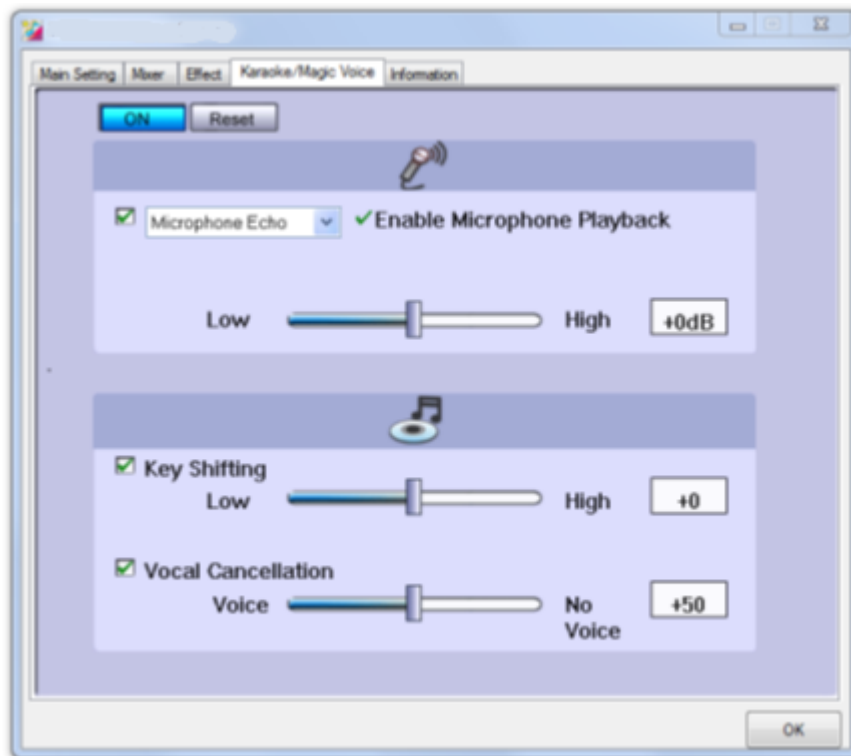
#### Equalizer

Using the integrated equalizer, you can increase or attenuate audio signals in 10 frequency bands to emphasize bass or treble.



### 3.4 Karaoke / Magic Voice

Here you can activate special effects for your microphone input, move the tone of the play or regulate voice suppression.





### 3.5 Information

#### Information

The last tab displays general information about the application. It also allows you to Choose whether or not to display the icon for starting the Control Panel in the taskbar.



#### On-Line Diamond Multimedia Support:

<http://tickets.diamondmm.com/>

#### On-Line Diamond Multimedia Knowledge base:

<http://tickets.diamondmm.com/kb/index.php>