

# Dockit SharePoint Manager Service Installation Guide

## Overview

Dockit SharePoint Manager Service is a Windows Service that must be installed in the target SharePoint farms. The Dockit SharePoint Manager Service is used to collect information from the SharePoint server and communicate it back to the client application through the TCP port number that's configured in the target SharePoint server.

## System Requirements

Dockit SharePoint Manager Service must be installed in the web front-end server or application server in the SharePoint 2016 / 2013 / 2010 / 2007 farm.

### SharePoint 2016 farms

**Disk space:** Minimum of 20 MB of free disk space

**Operating System:** Windows Server 2012 (or) Windows Server 2012 R2 (or) Windows Server 2016 with .NET Framework 4.5 with the latest service packs.

**Software:** Microsoft SharePoint Server 2016 (or) Microsoft SharePoint Foundation 2016 front-end or application server

**Database:** Microsoft SQL Server 2012 (Enterprise / Standard / Developer / Express edition) (or) Microsoft SQL Server 2008 (Enterprise / Standard / Developer / Express edition) or Microsoft SQL Server 2005 (Enterprise / Standard / Developer / Express edition) running in local / remote computer with latest Service Pack.

### SharePoint 2013 farms

**Disk space:** Minimum of 20 MB of free disk space

**Operating System:** Windows Server 2012 (or) Windows Server 2008 R2 with .NET Framework 4.5 with the latest service packs.

**Software:** Microsoft SharePoint Server 2013 (or) Microsoft SharePoint Foundation 2013 front-end or application server.

**Database:** Microsoft SQL Server 2012 (Enterprise / Standard / Developer / Express edition) (or) Microsoft SQL Server 2008 (Enterprise / Standard / Developer / Express edition) or Microsoft SQL Server 2005 (Enterprise / Standard / Developer / Express edition) running in local / remote computer with latest Service Pack.

### SharePoint 2010 farms

**Disk space:** Minimum of 20 MB of free disk space

**Operating System:** Windows Server 2008 with .NET Framework 3.5 with the latest service packs.

**Software:** Microsoft SharePoint Server 2010 (or) Microsoft SharePoint Foundation 2010 front-end or application server

**Database:** Microsoft SQL Server 2012 (Enterprise / Standard / Developer / Express edition) (or) Microsoft SQL Server 2008 (Enterprise / Standard / Developer / Express edition) or Microsoft SQL Server 2005 (Enterprise / Standard / Developer / Express edition) running in local / remote computer with latest Service Pack.

### SharePoint 2007 farms

**Disk space:** Minimum of 20 MB of free disk space

**Operating System:** Windows Server 2003 (or) Windows Server 2008 with .NET Framework 3.5 or higher with the latest service packs.

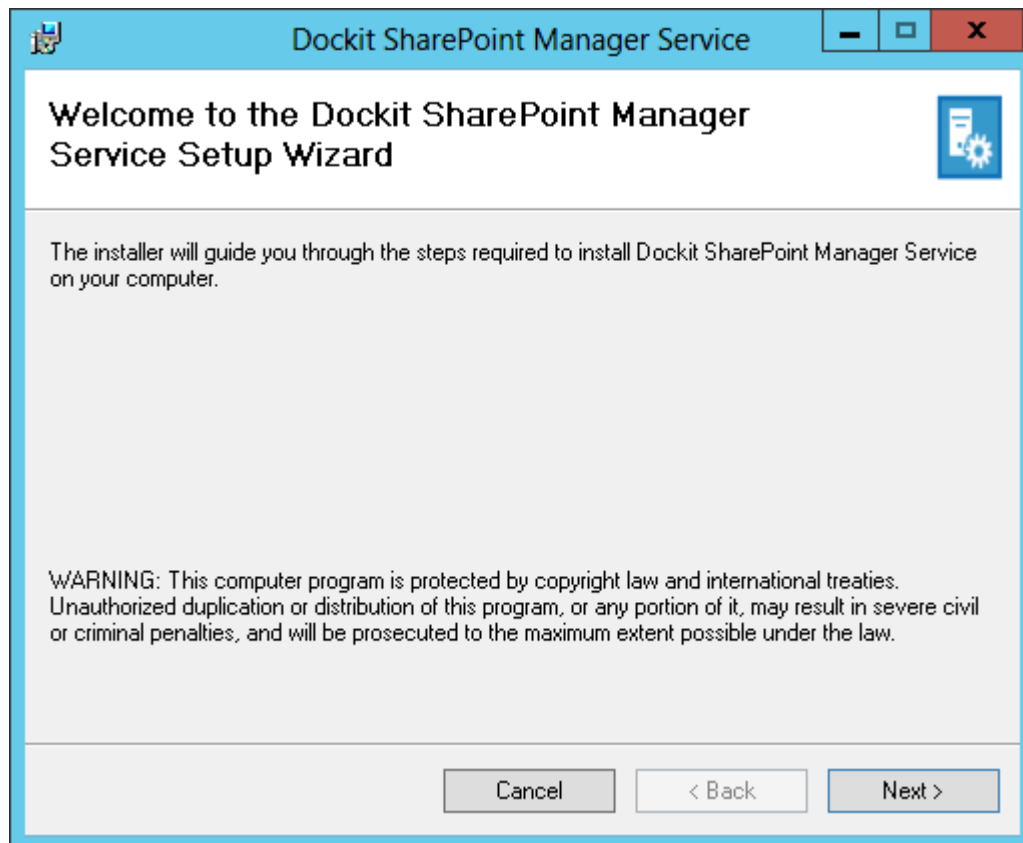
**Software:** Microsoft Office SharePoint Server 2007 (or) Windows SharePoint Services 3.0 front-end or application server.

**Database:** Service Pack. Microsoft SQL Server 2012 (Enterprise / Standard / Developer / Express edition) (or) Microsoft SQL Server 2008 (Enterprise / Standard / Developer / Express edition) or Microsoft SQL Server 2005 (Enterprise / Standard / Developer / Express edition) running in local / remote computer with latest Service Pack.

### Installation Steps

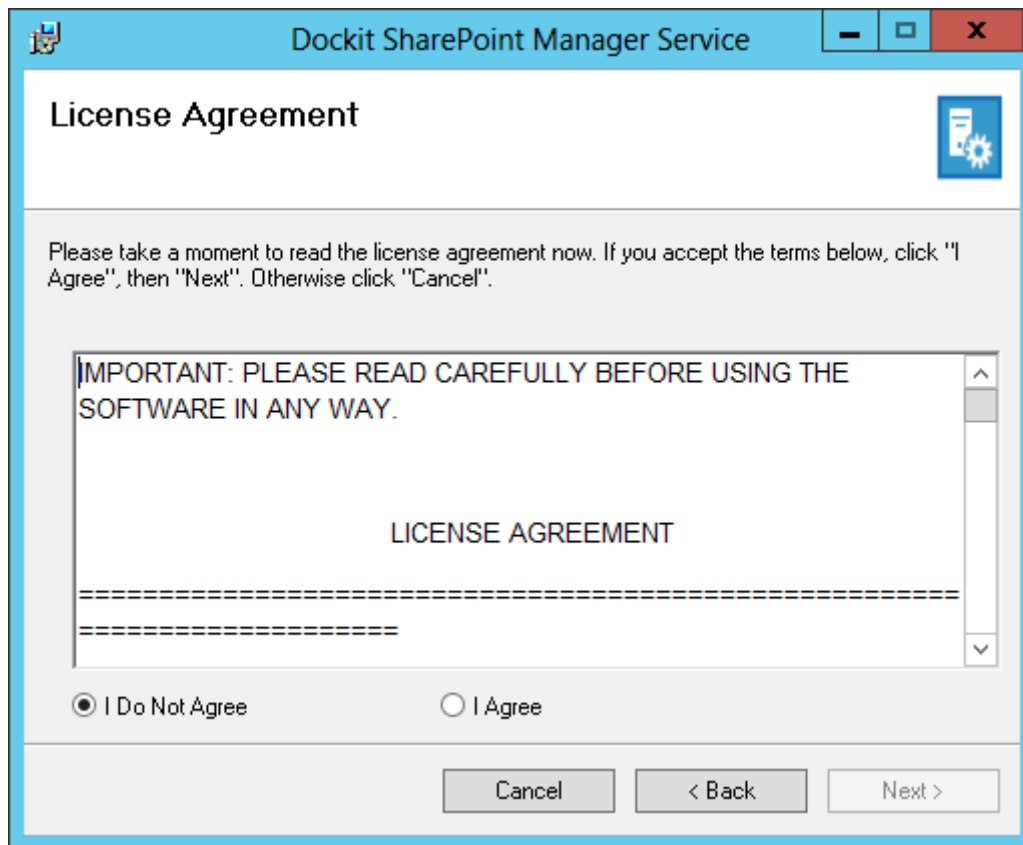
The simple setup wizard will guide you through the installation process as shown below:

**Step 1:** Once you double-click the Dockit SharePoint Manager Service.exe, the setup wizard will commence as shown below:



Click **Next** to proceed.

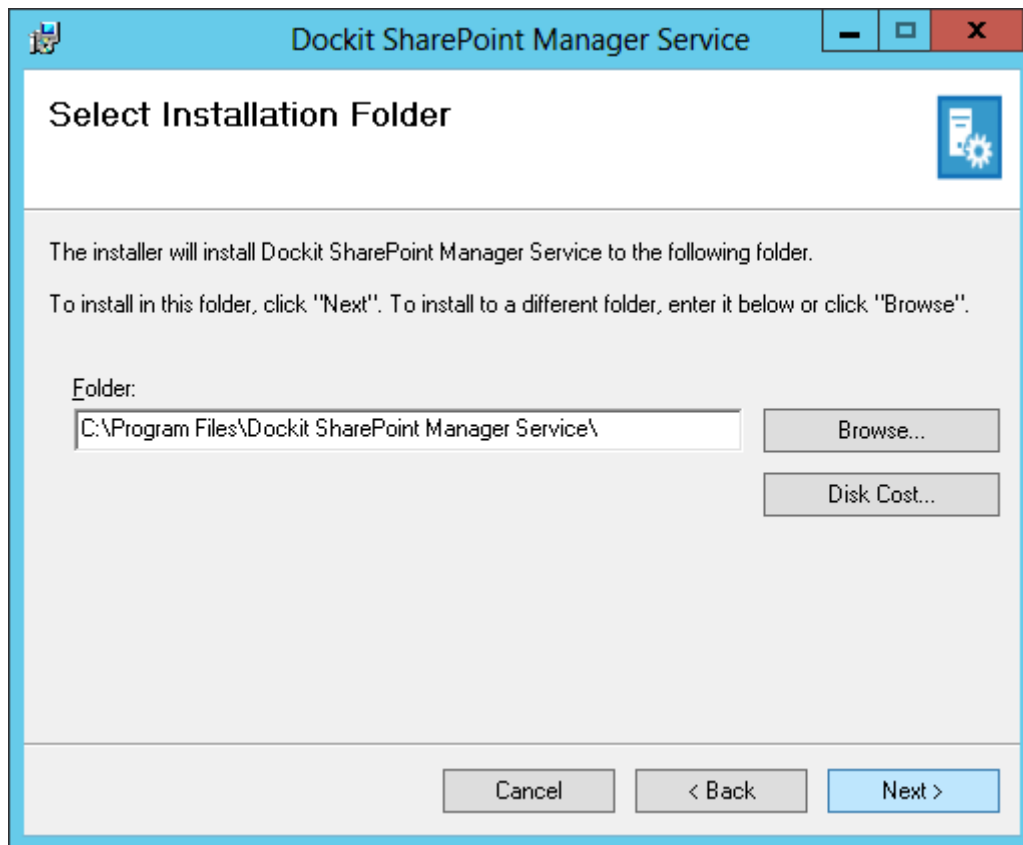
**Step 2:** License Agreement screen will be shown as below:



Please go through the License Agreement information to familiarize yourself with the contents. This will help you when purchasing the product license.

Click **I Agree** to accept the terms in the **License Agreement** screen and Click **Next** to proceed.

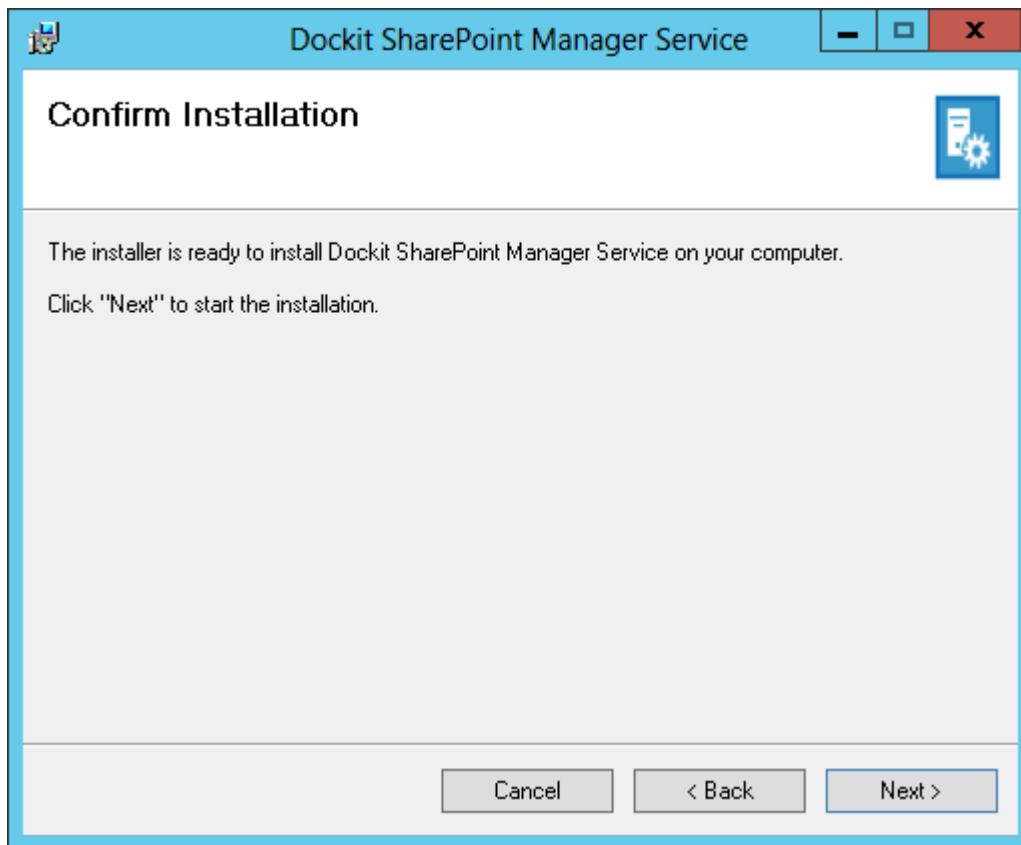
**Step 3:** Installation Location screen will be shown as below:



- You can select the default location displayed (or)
- You can specify your preferred location through the **Browse** button.

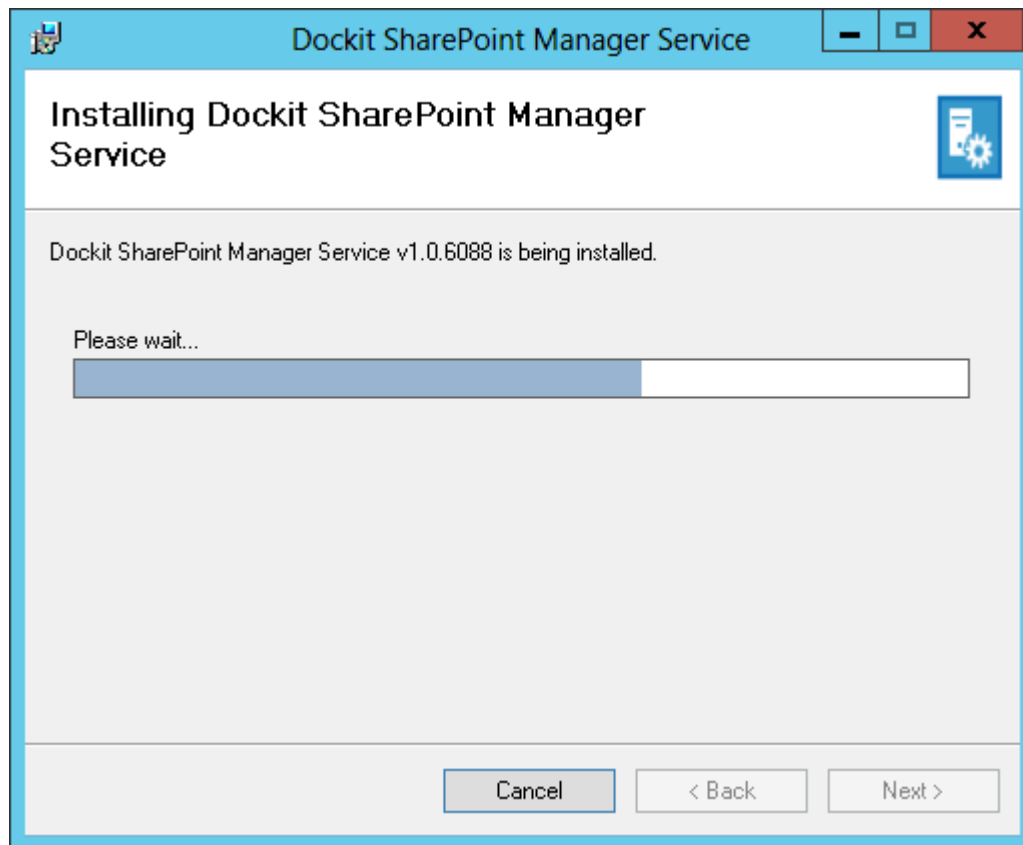
The **Disk Cost** button is used to check for available free space in the partition you want to install the product. Click Next to proceed.

**Step 4:** Confirm Installation screen is displayed as below:

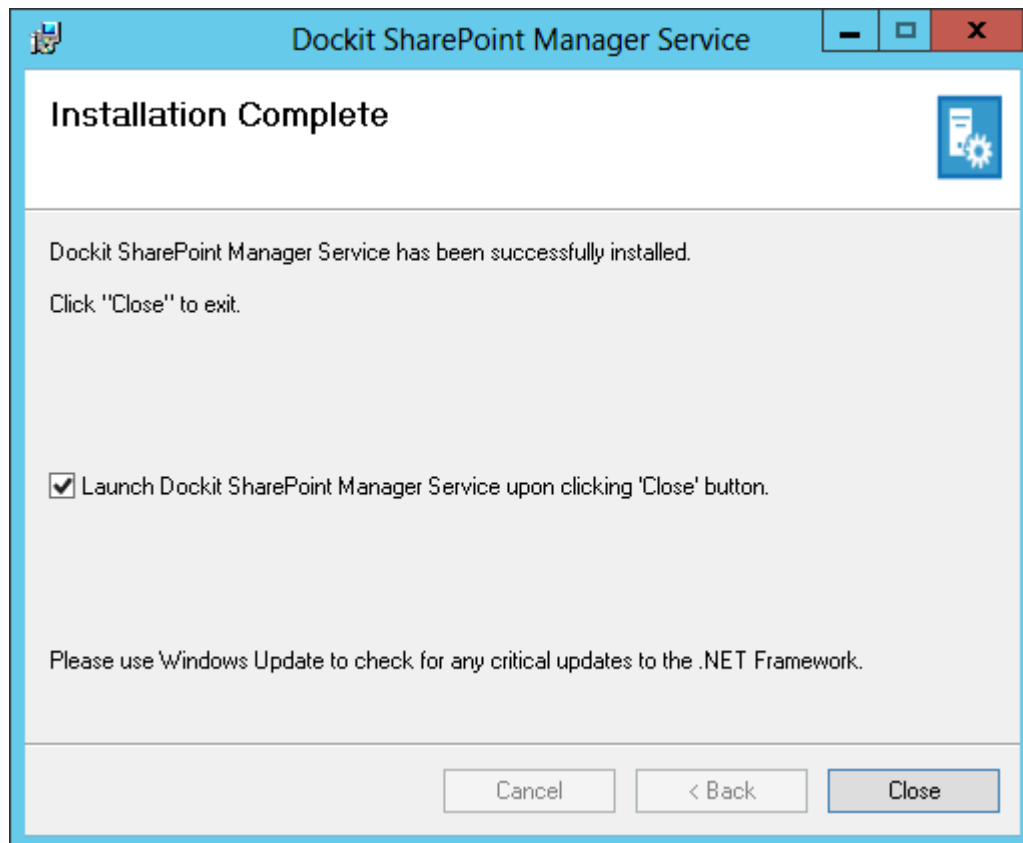


- **Back** – Click this if you want to retrace your steps and change the selected settings.
- **Next** – Click this if you want to proceed with installation.

The progress of the installation is displayed in the **Installing Docket SharePoint Manager Service** screen as shown below.



Once the installation is complete, the **Installation Complete** window is displayed as below.



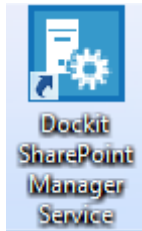
If the **Launch Dokit SharePoint Manager Service upon clicking 'Close' button** check-box is checked, then the application is launched immediately. If you do not want the application to start immediately, then uncheck this check-box.

Click **Close** to close the installation wizard.



## Configuring Dockit SharePoint Manager Service

Once you have installed the Dockit SharePoint Manager Service, you can find the icon in the desktop as shown below.

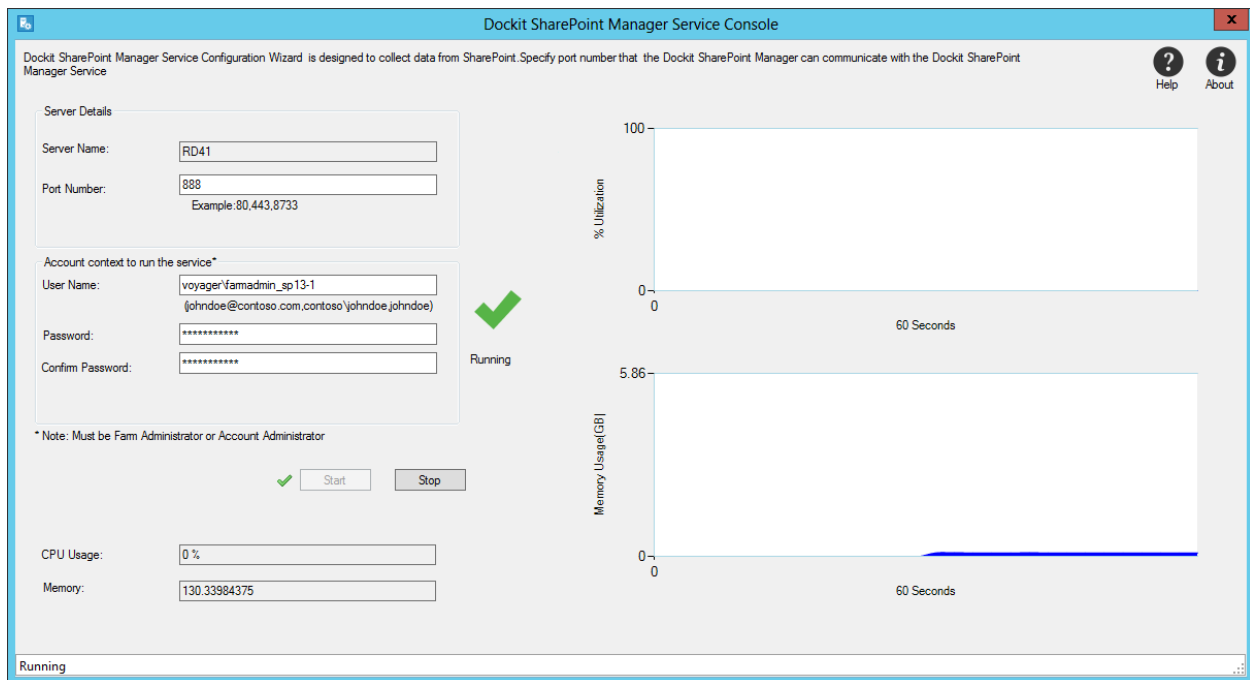


Double **click** on the icon will show a form as below.

The screenshot shows the "Dockit SharePoint Manager Service Console" window. It contains a "Server Details" section with fields for "Server Name" (RD41) and "Port Number" (888). Below this is an "Account context to run the service\*" section with fields for "User Name" (vovager\amadmin\_gp13-1), "Password" (masked with asterisks), and "Confirm Password" (masked with asterisks). A large red "X" is overlaid on the "User Name" field, and the text "Not Connected" is displayed next to it. At the bottom, there are "Start" and "Stop" buttons. A status bar at the very bottom indicates "service stopped".

In this form, you can enter the **Port Number** for communication between Dockit SharePoint Manager Service and Dockit SharePoint Manager Application. The port number should be open for communication through the firewall. You can then enter the username and password credentials. The user credentials must be a farm administrator in the target SharePoint farm to run the Dockit SharePoint Manager Service in elevated privileges to gather all data without any limitations.

Then click **Save** button. Now a Windows Service will be created in the name of "**Dockit SharePoint Manager Service**" and the dialog appears as below:



You have now configured Dokit SharePoint Manager Service successfully in the SharePoint server.

Dockit SharePoint Manager Service is a trademark of Vyapin Software Systems Private Limited. All other registered trademarks or trademarks are property of their respective owners.

The information in this document is provided in connection with Vyapin's products. This document contains proprietary information protected by copyright. No part of this document may be reproduced or transmitted in any form or by any means, electronic or mechanical, including photocopying and recording for any purpose without the written permission of Vyapin Software Systems (P) Limited.

### **Disclaimer**

Vyapin makes no representations or warranties with respect to the accuracy or completeness of the entire content of this document. Vyapin reserves the right to make changes to the specifications and product descriptions at any time without notice. Vyapin does not make any commitment to update the information contained in this document.

Vyapin assumes no liability whatsoever and disclaims any express, implied or statutory warranty relating to its products including, but not limited to, the implied warranty of merchantability, fitness for a particular purpose, or non-infringement. Under no circumstances shall Vyapin be liable for any direct, indirect, consequential, punitive, special or incidental damages (including, without limitation, damages for loss of profits, business interruption or loss of information) arising out of the use or inability to use this document, even if Vyapin has been advised of the possibility of such damages.

### **Contact information**

Website	<a href="http://www.vyapin.com">www.vyapin.com</a>
Sales	<a href="mailto:sales@vyapin.com">sales@vyapin.com</a>
Technical Support	<a href="mailto:support@vyapin.com">support@vyapin.com</a>