

C E N T U R I A

Lotus Notes Client R6/R7

and

SMB iCRM database
SMALL BUSINESS
CUSTOMER RELATIONSHIP MANAGEMENT

Installation & Configuration



More information: info@centuria.co.uk

Download Demo Version of SMB iCRM database:
<http://www.centuria.co.uk>

Lotus Notes Client download

To access **SMB iCRM** database, you have to download and install on your computer Lotus Notes Client or/and Lotus Domino Server software. Simply connect to the Internet (if not already connected) and type in the following address (or just click the link below):

<http://www.lotus.com/downloads>

Having entered the correct web address, Lotus Software Downloads page is displayed.

Lotus downloads

Trial downloads

Updates, fixes, and utilities

Toolkits

- ↓ Featured trials
- ↓ All Lotus trials and emerging technologies
- ↓ Software Evaluation Kit DVDs

This downloads page provides links to free trial software downloads for Lotus Notes, Lotus Domino, Domino Designer, the Domino Administrator client, Domino Access for Microsoft Outlook, Lotus Enterprise Integrator, and Lotus Connector for SAP R/3.

If you are looking for Smart Upgrade Kits (also known as incremental installers or software updates) for Lotus Notes/Domino, see the [Updates, fixes, and utilities page](#).

Note: You must have a separate [IBM Web Membership](#) registration for most of these downloads.

Featured trials

Try trial versions of Lotus Notes, Lotus Domino, and Domino Designer.

- [Lotus Domino® V6.5.4](#)
- [Lotus Notes® Client V6.5.4](#)
- [Lotus Notes, Domino Designer, and Domino Administrator clients V6.5.4](#)

Go to *Featured trials* section and follow the instructions how to register and download the software.

For desktop installation only you should download Lotus Notes Client, for server and desktop installations you should download both Lotus Notes Client and Lotus Domino.

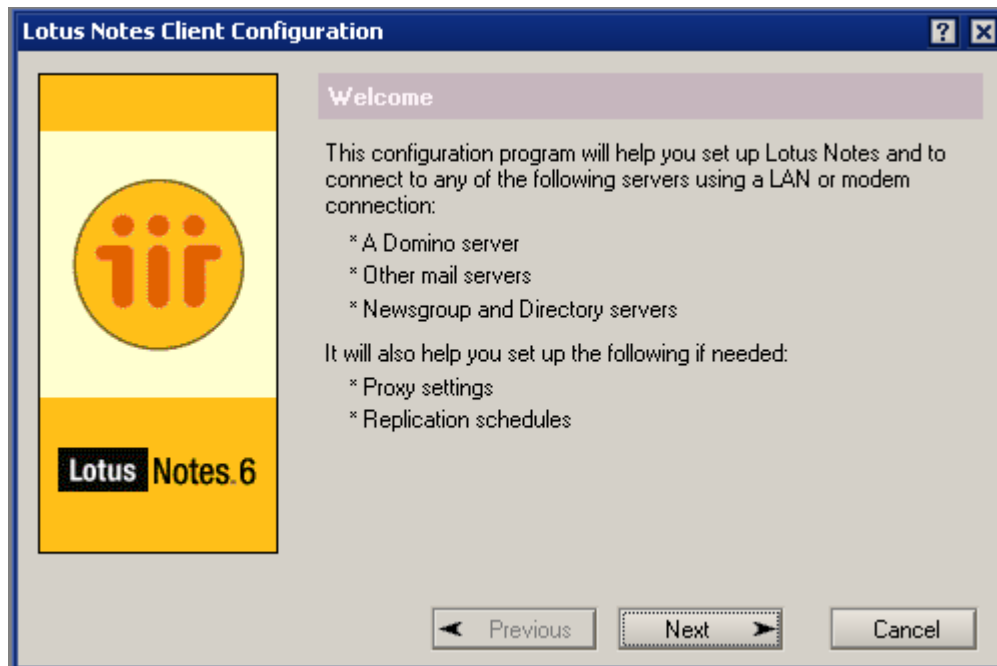
Lotus Notes Client configuration

(process is described for version 6.0.2, but similar installation should be done for any other versions)

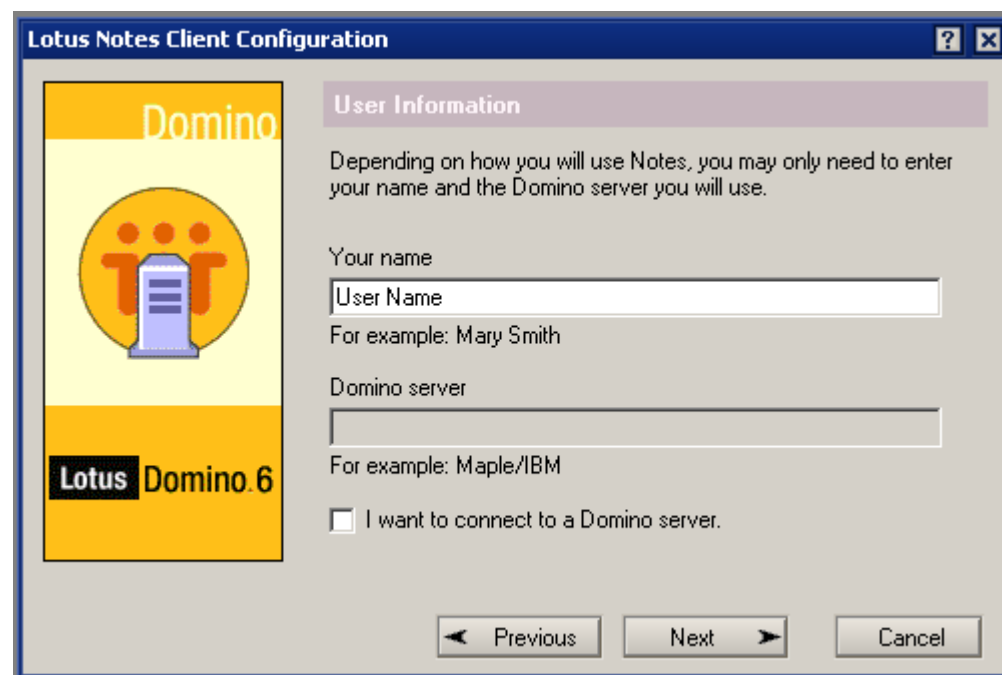
Install software on your computer.

When installation process is completed click the Finish button.

Go to Start – Programs – Lotus Applications – Lotus Notes.

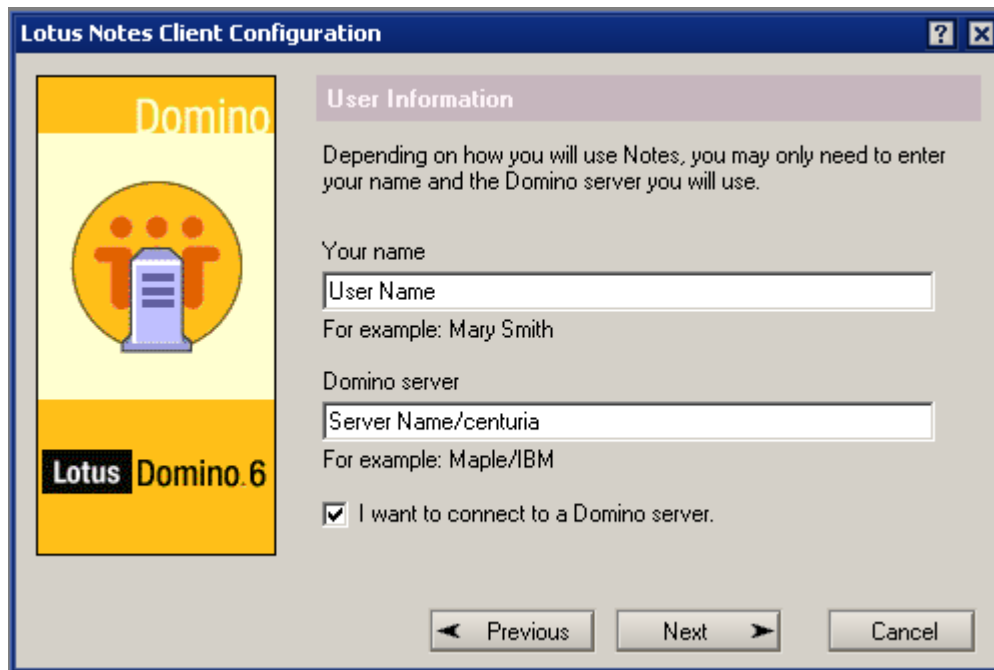


Click Next.

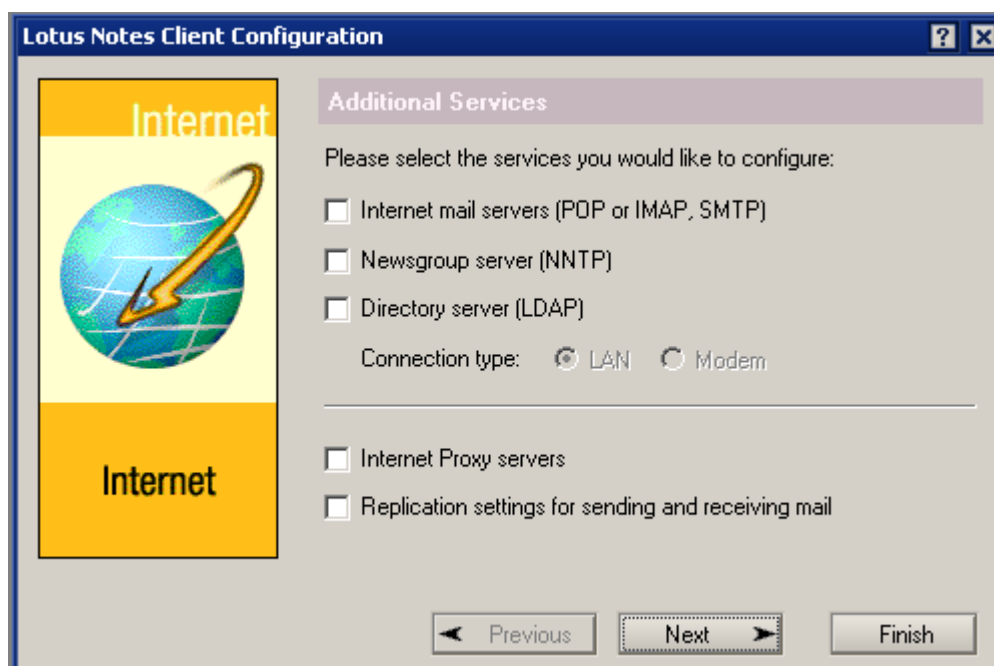


Enter your name in the Your name field and click Next.

If you want to connect to a Domino server select I want to connect to a Domino server option and enter Domino server name in Domino server field.



The screenshot shows the 'Lotus Notes Client Configuration' window with the 'User Information' tab selected. On the left is a yellow panel with the 'Domino' logo and 'Lotus Domino.6' text. The main area has a title bar 'User Information' and instructional text: 'Depending on how you will use Notes, you may only need to enter your name and the Domino server you will use.' Below this are two text input fields: 'Your name' with a placeholder 'User Name' and example 'For example: Mary Smith', and 'Domino server' with a placeholder 'Server Name/centuria' and example 'For example: Maple/IBM'. A checkbox labeled 'I want to connect to a Domino server.' is checked. At the bottom are 'Previous', 'Next', and 'Cancel' buttons.



The screenshot shows the 'Lotus Notes Client Configuration' window with the 'Additional Services' tab selected. On the left is a yellow panel with the 'Internet' logo and 'Internet' text. The main area has a title bar 'Additional Services' and instructional text: 'Please select the services you would like to configure:'. Below this are three unchecked checkboxes: 'Internet mail servers (POP or IMAP, SMTP)', 'Newsgroup server (NNTP)', and 'Directory server (LDAP)'. A 'Connection type:' section has two radio buttons, 'LAN' (selected) and 'Modem'. Below these are two more unchecked checkboxes: 'Internet Proxy servers' and 'Replication settings for sending and receiving mail'. At the bottom are 'Previous', 'Next', and 'Finish' buttons.

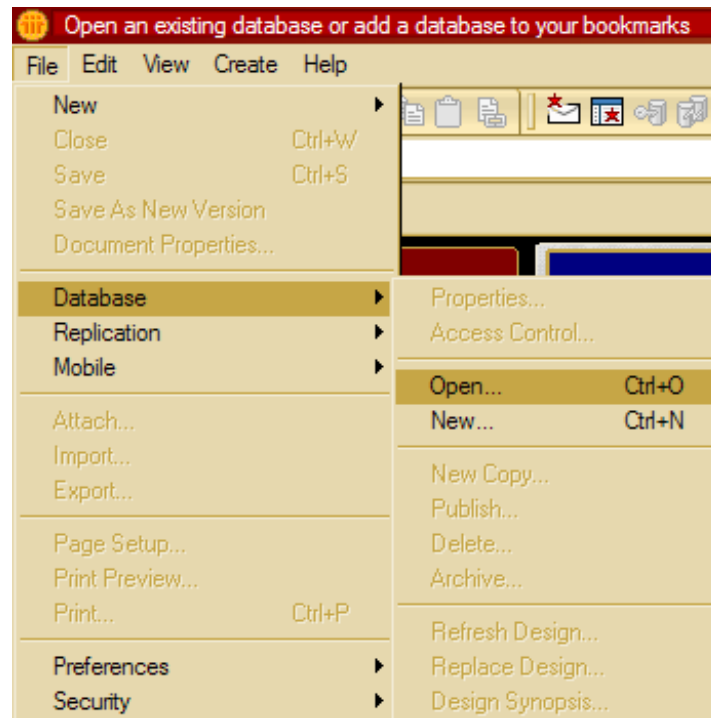
Without checking any boxes click Next button.

SMB iCRM database installation

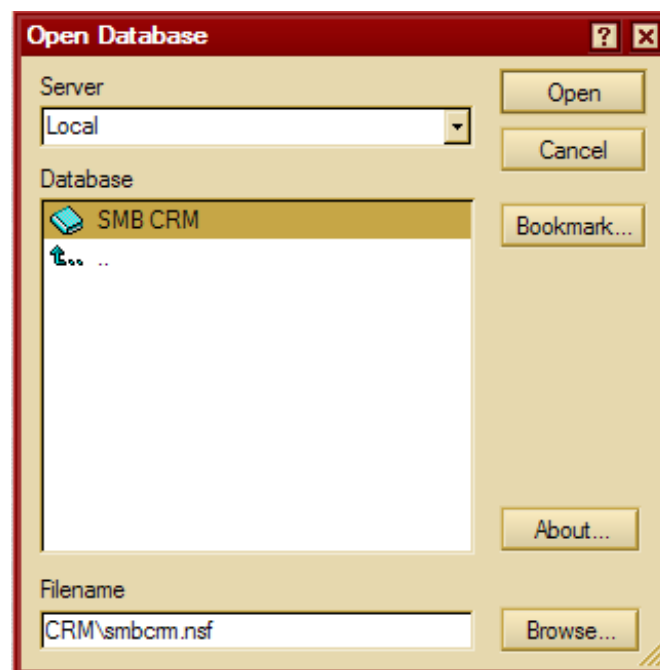
Now you need make a copy of SMB iCRM nsf file into Lotus Notes root directory, usually: c:\Program Files\Lotus\Notes\Data\

Then add database icon to your bookmarks.

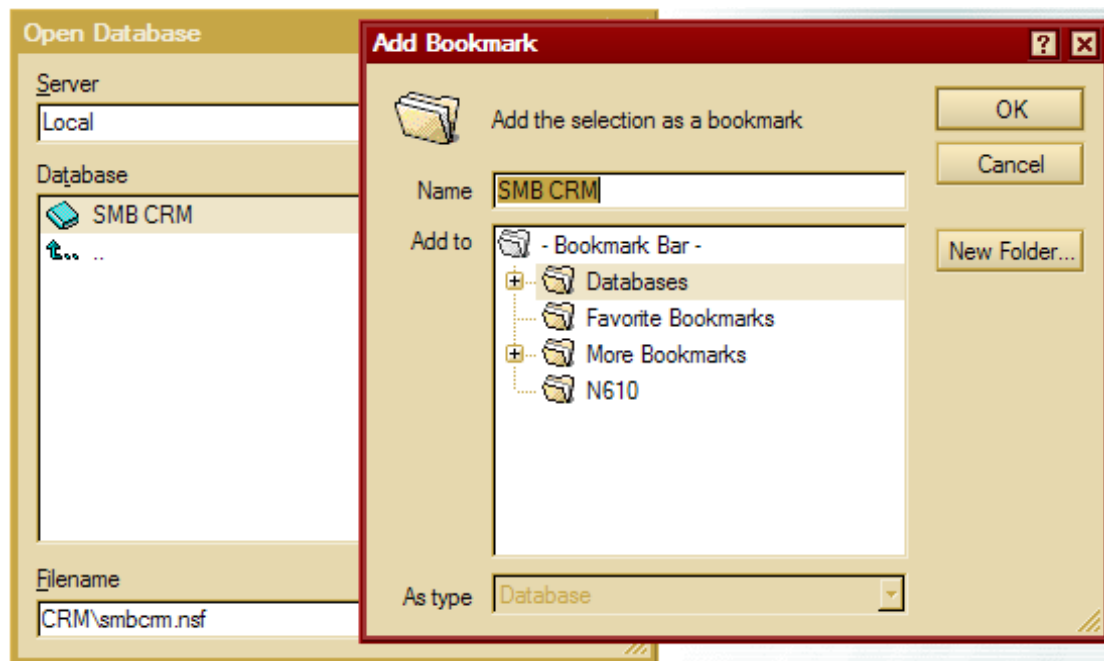
Select **File-Database-Open** from Menu or press and hold **Ctrl** on your keyboard and then press **O** (Ctrl+O).



Choose server (Local for local database location: c:\Program Files\Lotus\Notes\Data\)



Find and select SMB iCRM database



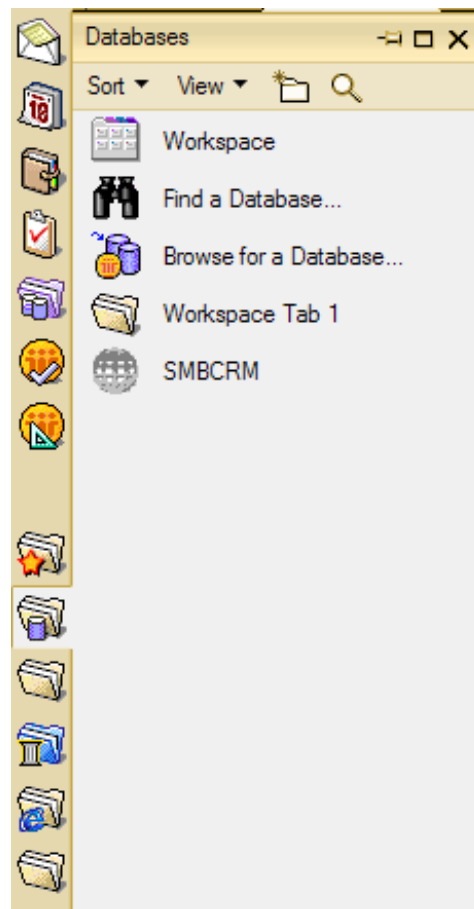
Click Bookmark... to add SMB iCRM database to your Bookmarks (you can find them on your left-hand side of the screen).

Select Databases, Favorite Bookmarks, More Bookmarks or create a new folder and then click OK button.

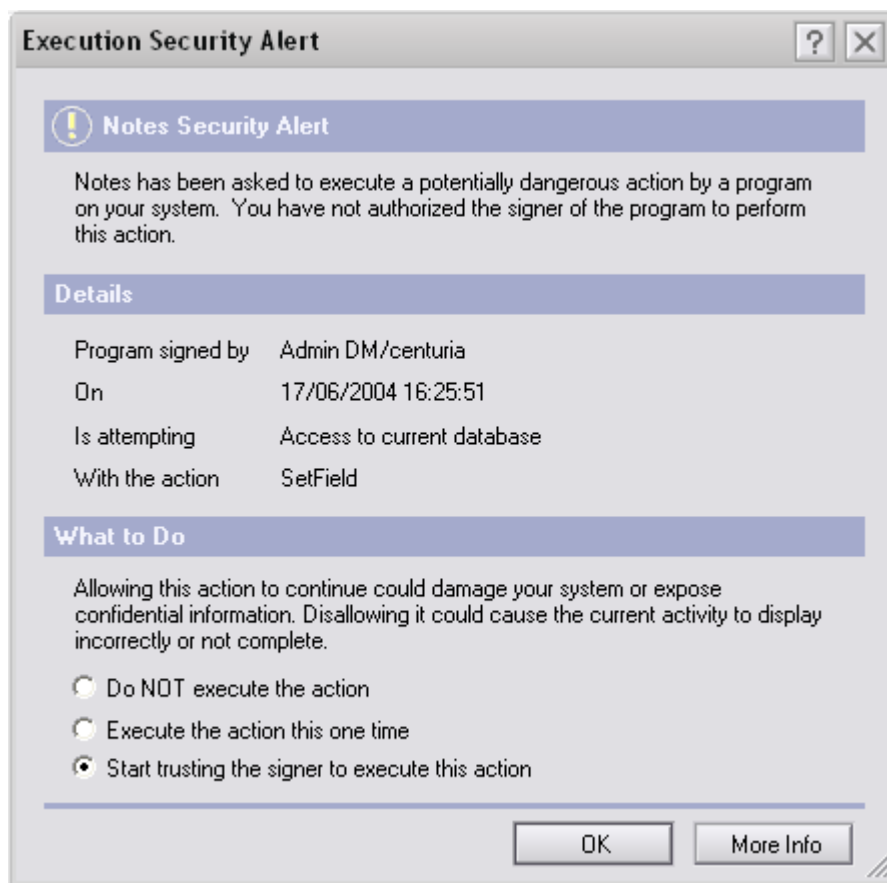


If you selected Favorite Bookmarks you would be able to find SMB iCRM database in the Favorite Bookmarks section.

To open SMB iCRM database click SMB iCRM icon on your bookmarks page.



If while using the database you would see the Execution Security Alert window, select the option Start trusting the signer to execute this action and choose OK. You may need to do this more than once, but only while using a new feature for the first time.



Now all the basic installation and configuration processes are finished. Your SMB iCRM database is open and you can start work on it and enjoy all its functionality.

If you have any queries whilst using SMB iCRM database, please do not hesitate to contact us: info@centuria.co.uk.

We are always looking to develop the functionality of the database, so if you have any further requirements or feedback we would like to hear from you.

If you wish to find more information please visit:

<http://www.centuria.co.uk>